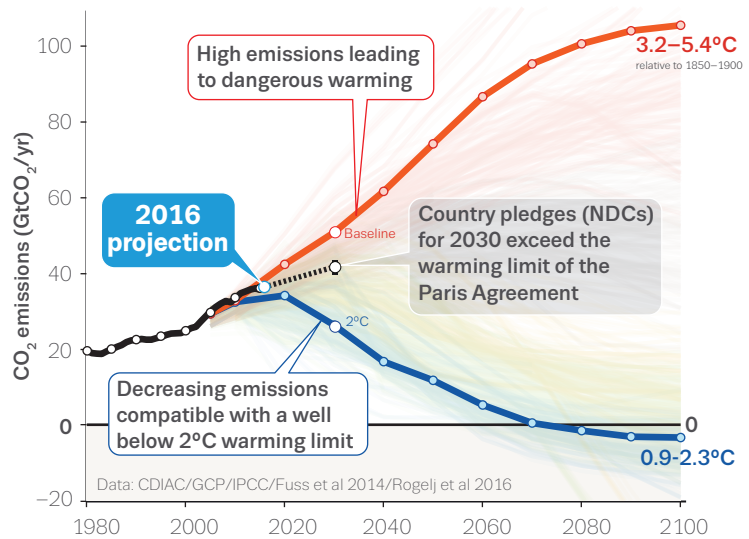
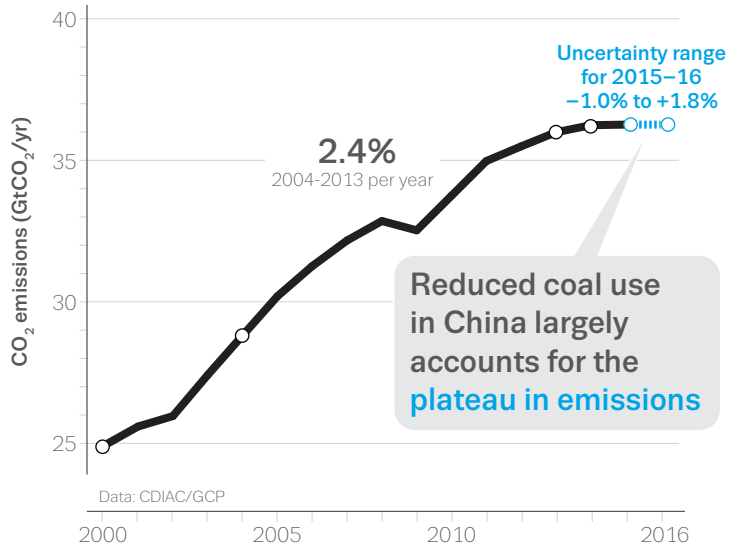


Global Carbon Budget 2016

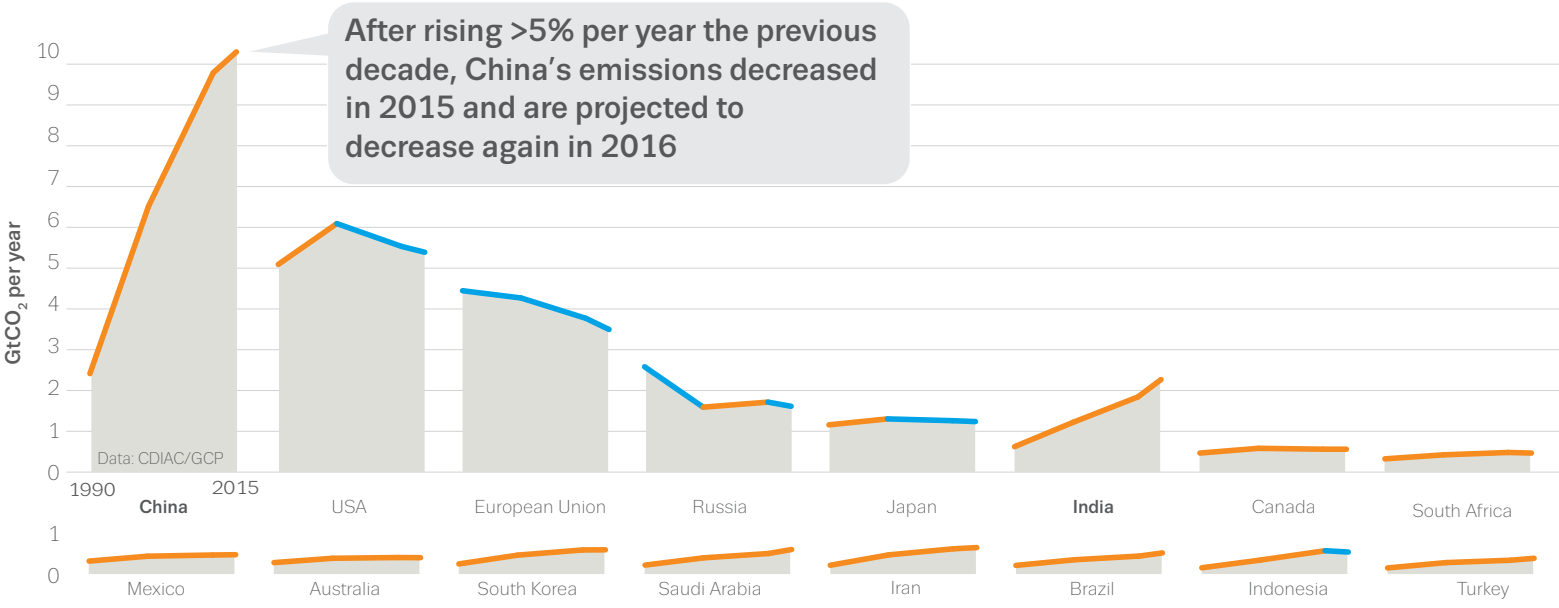
Atmospheric CO₂ levels have crossed 400 ppm...
 ...only near zero emissions will stop this rise
 315 ppm
 Data: Scripps/NOAA-ESRL
 1960 2016

Global emissions from fossil fuels and industry did not grow in 2015 and are projected to **rise slightly in 2016**.
 This is the third year in a row where global emissions are below 1% growth while global GDP exceeds 3% growth

Between the Paris agreement and the Marrakesh plan of action, we are **here**

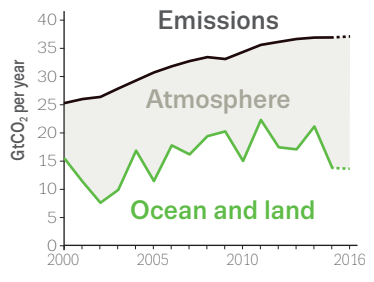


Emissions trends vary among countries



While atmospheric CO₂ moves permanently above 400ppm

The big El Niño in 2015-2016 led to smaller CO₂ uptake by plants and left much more emissions in the atmosphere than usual



Atmospheric CO₂ concentration will continue to rise until CO₂ emissions are cut down to near zero

